

Community Rehab Care Quality Management Report Analysis Home and Community Based Waiver Services (HCBS) 2022

MISSION STATEMENT

To provide high quality, outpatient rehabilitation services to individuals living with acquired brain injuries under the Residential or Community Living Waiver programs.

QUALITY IMPROVEMENT

Our goal is to improve our client outcomes. We measure efficiencies, effectiveness, satisfaction, and access to services in our outpatient neuro rehab program.

PROCESS

Information included in this report was extracted from our electronic health record, MWTherapy, and from an Excel spreadsheet used to track demographics and annual outcomes assessments. This report includes:

- Demographic information for clients receiving Waiver services at Community Rehab Care in 2022
- Functional outcome measures of disability, level of supervision, community integration, functional mobility, and satisfaction with life based on annual testing completed in 2022 for clients receiving Waiver services at Community Rehab Care in 2022
- Analysis of data trends over time for clients receiving Waiver services at Community Rehab Care

Report Summary:

Clients who receive rehabilitation services through the ABI/MFP waiver at Community Rehab Care experience a wide range of abilities but on average in 2022 had moderate-severe disability from a neurological injury or condition, required full-time supervision, experienced limitations in community integration and mobility, had an increased risk for falls, and reported below average satisfaction with life.

With long-term maintenance rehabilitation services, the majority of clients maintain level of physical, cognitive, behavioral, emotional and social ability with a small number of clients experiencing an improvement or a decline in relatively equal numbers. Walking ability and balance are maintained in a majority of clients, but it is notable that a significant percentage demonstrate improvements from baseline testing.

Respectfully Submitted,



Gwendolyn Larsen, PT, DPT
Education and Outcomes Specialist

Demographics:

Caseload

Total waiver clients on caseload for 2022: 47*

New clients in 2022: 3

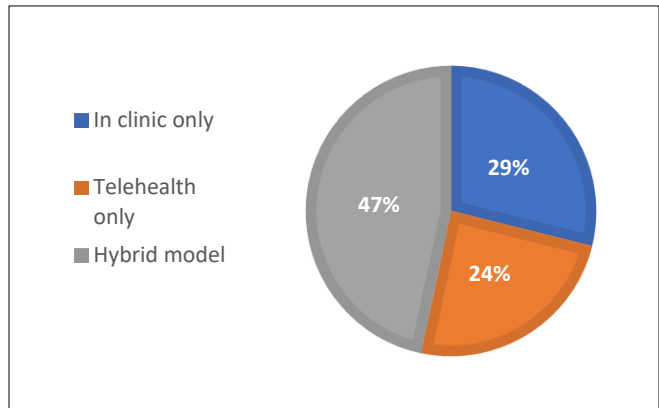
Discharges: 5; reasons –

- Preference for home care services (2)
- Hospitalization/medical (1)
- Schedule conflict (2)
- Not appropriate for outpatient (1)

*As of May 2022, a waitlist and 1 in/1 out policy was instituted for clients requiring or requesting in clinic services.

Service Delivery

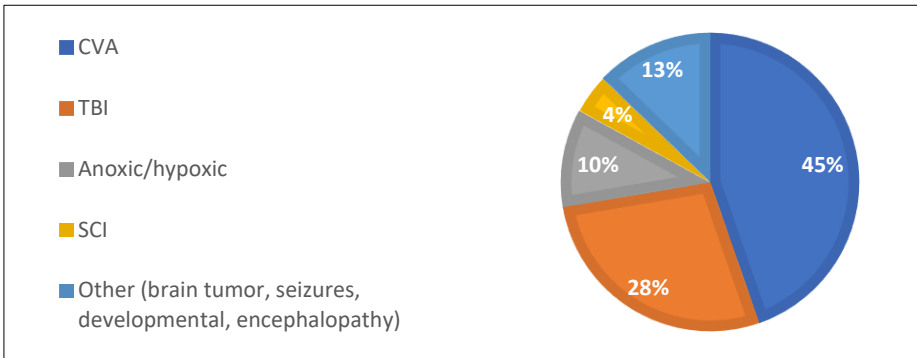
Telehealth services continue to be offered as part of our programming with many clients participating in a hybrid model, a mix of both weekly in-person and virtual sessions.



Age

Average age: 56 years
Age range: 22-75 years

Diagnoses



Place of Residence

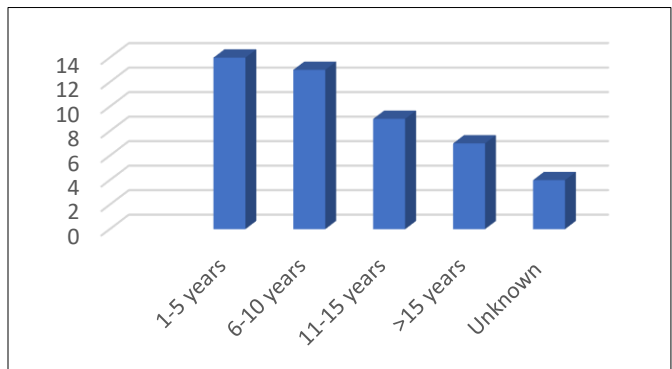


63% Residential/group home (Residential Waiver)



37% Home/apartment with supports (Community Living Waiver)

Time Since Injury



Functional Outcomes:

Testing and data collection continued to be somewhat limited in 2022 as a significant number of visits were provided in a virtual format. At least partial testing was completed on 27 clients, 2 of whom were new clients and 25 who were tested as part of an annual re-assessment.

Outcome Measure	Scores	Interpretation
Mayo-Portland Adaptability Inventory (n=25)	Mean: 54 Median: 53 Range: 37-69	Measures the amount of physical, cognitive, behavioral, emotional and social problems people may encounter after ABI as well as possible obstacles during the community reintegration process <ul style="list-style-type: none"> • > 60 severe • 50-60 moderate-severe • 40-50 mild-moderate • 30-40 mild • < 30 relatively good outcome
Supervision Rating Scale (n=26)	Mean: 7.8 Median: 8 Range: 2-12	Measures the level of supervision a client receives from level 1-13 with a lower score indicating more independence
Community Integration Questionnaire (n=27)	Mean: 8.6 Median: 7 Range: 1-19	Measures level of integration into the community after ABI on a scale of 1-29 with a higher score indicating greater independence and community integration
Satisfaction with Life Scale (n=17)	Mean: 17.5 Median: 18.5 Range: 5-30	Measures amount of an individual's life satisfaction reported after ABI <ul style="list-style-type: none"> • 30-35 Very satisfied • 25-29 High satisfaction • 20-24 Average • 15-19 Below average • 10-14 Dissatisfied • 5-9 Extremely dissatisfied
Disability Rating Scale (n=19)	Mean: 7.3 Median: 7 Range: 4-13	Used to document progress of clients with ABI from coma to community reintegration <ul style="list-style-type: none"> • 0 No disability • 1 Mild disability • 2-3 Partial disability • 4-6 Moderate disability • 7-11 Moderately severe disability • 12-16 Severe disability • 17-21 Extremely severe disability • 22-24 Vegetative state • 25-29 Extreme vegetative state
10-meter Walk Test (n=14)	Mean: 0.65 m/s Median: 0.55 m/s Range: 0.15-1.82 m/s	Speeds of <1.0 m/s indicate increased fall risk; ambulation categories as follows: <ul style="list-style-type: none"> • <0.4 m/s are more likely to be household ambulator • 0.4 m/s- 0.8 m/s limited community ambulator • >0.8 m/s community ambulator
Berg Balance Scale (n=21)	Mean: 27 Median: 34 Range: 2-54	The maximum score is 56, scores of <45/56 indicate increased fall risk

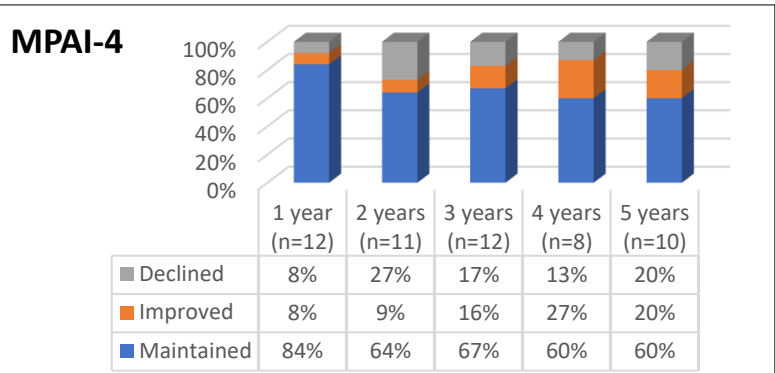
Analysis:

An analysis of clients who have been receiving waiver services through Community Rehab Care for greater than 1 year was performed. Clients were included in the analysis for each measure if they had at least 2 scores documented; baselines scores at evaluation or first testing were compared with most recent score.

Mayo-Portland Adaptability Index (MPAI-4)

Date span: 2017 to 2022
 Number of clients: 53
 Time between baseline testing and most recent score: 1 to 5 years

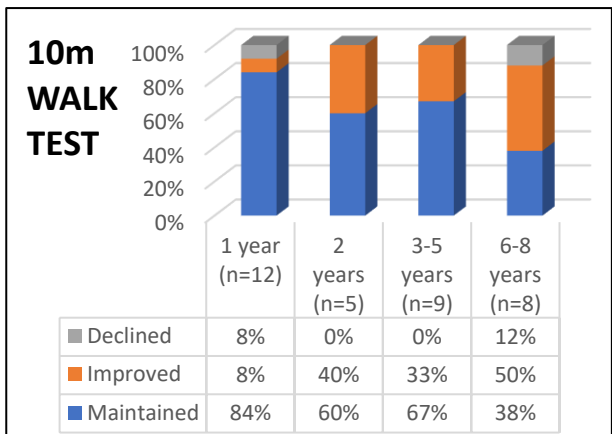
Most clients maintained a range of abilities over time with a smaller percentage of clients experiencing an improvement or decline in relatively equal numbers.



10m Walk Test (10mWT)

Date span: 2013 to 2022
 Number of clients: 33 (40 clients had data but 7 were nonambulatory and therefore not included in the analysis)
 Time between baseline testing and most recent score: 1 to 8 years

Most clients maintained their walking speed over time with a significant proportion demonstrating improvement from baseline. Only 2 clients declined, and these scores were recorded after a period of 1 and 6 years.



Berg Balance Scale (BBS)

Data span: 2014 to 2022
 Number of clients: 33
 Time between baseline testing and most recent score: 1 to 6 years

Most clients maintained their balance function over time and a significant proportion improved although this effect lessened with longer time spans. Only 1 client showed a decline in most recent testing compared with baseline and this was recorded at 5 years post evaluation.

